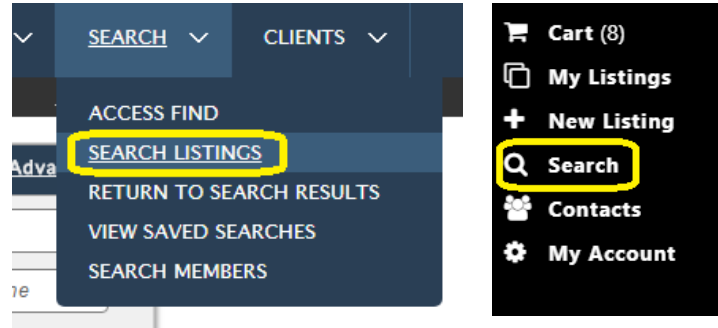




Step 1:

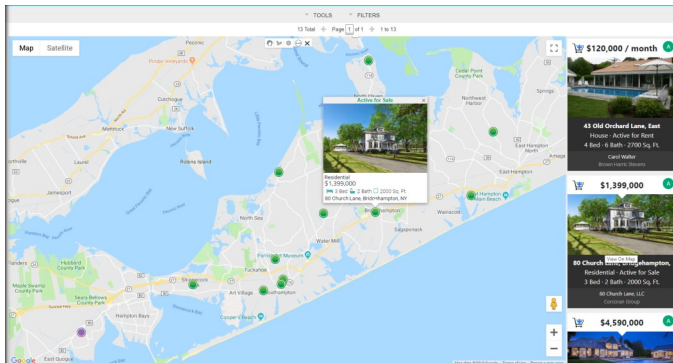
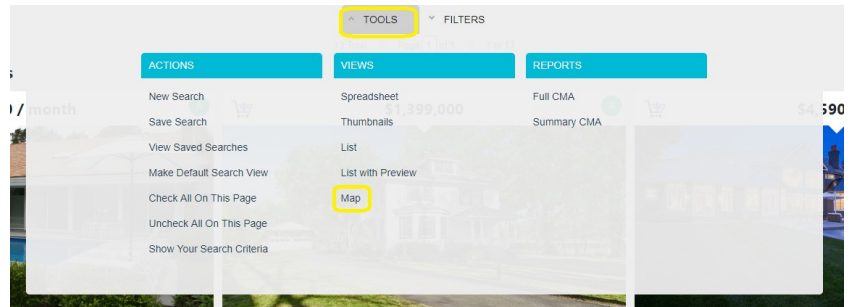
Conduct a new search by selecting 'Search Listings' from the 'Search' drop down, or by clicking 'Search' from your Profile Side Bar.

For help doing a search, follow the search tutorial sheet



Step 2:

Once your search results have loaded, click on 'Tools' from the secondary menu bar. Select 'Map' found under the 'Views' section. Your search results will reload with the new map view.



Step 3: The Map Search is broken into two parts. The map on the left, and the list of properties to the right. When selecting a property on the right hand list, a flag will pop-up on the map, showing you where that property is located. To view a listing, click the listing on the right hand side list, or the listing thumbnail when it appears on the map.

Step 4: By “drawing” on the map you can further refine your search results.



Hand:

Selecting this button will allow you to “grab” the map to move it around. (This feature is great if you are zoomed in and need to move to a different area of the map.)

Freehand Shape:

This allows you to create your own shape. Once you’ve completed the shape, your search results will update to show only the properties within the boundaries you created.

Circle:

This allows you to draw a circle on the map. Once drawn, your search results will update to show only properties within the circle

Radius Search:

After clicking this icon, select on the map where you want the center of the circle to be. Then enter your mile radius and click ‘draw.’ This feature is great for searching for comps.

Use the X button to remove any drawn shape. This removes the shape, and returns to your original search results.